

1 **Gambaran Penggunaan *E-cigarette* di Kota A menurut usia dan jenis**
2 **kelamin**

3 [TITLE in sentence case only, except the Place, Names, or *Latin-word*,
4 Align center, Times New Roman 14, 1.5 spaces, bold]

5
6 Abbreviations should not be present in the title of manuscript except a very common entity
7 (DNA, RNA, COVID-19). No running titles.

8
9 **Firstname Lastname¹, Firstname Lastname², Firstname Lastname^{3*}**

10 [Align centre, TNR 12, 1 space, normal, put asterix * for the corresponding author]

11
12 ¹**Affiliation** – [In capitalize each word only, align justify, TNR 12, 1 spaces, normal, 1
13 column on the whole]

14 ²**Department of Neurosurgery, Faculty of Medicine, Universitas Udayana, Indonesia**

15 ³**Department of Medical Education, Faculty of Humanities, Taiwan Medical University,**
16 **Taiwan**

17
18 ***Corresponding email: Firstname Lastname. Mailing address. Email:**
19 **authors@gmail.com**

20 [Asterix first then write the similar text and the corresponding email, Align Justify,
21 TNR 12, 1 space, nospaces column on the whole]

22
23
24 **Layout Format**

Page size	A4
Margins	All Margins, 2.5 cm
Page number	Numbered at bottom right
Footer / Headers	None
Line Number	Continuous

25

26

27

ABSTRACT

28

[Align center, TNR 12, 1 space, bold, 1 column]

29

Sebuah ringkasan singkat dari topik. Abstrak disajikan dalam format struktur dan harus mencakup pendahuluan singkat, deskripsi kasus dan kesimpulan dari riset/based practise. Tidak melebihi 350 kata.

30

31

Introduction:

32

Methods:

33

Result:

34

Conclusion:

35

[The line must begin with the words Conclusion boldfaced. Align justify, TNR 12, 1 spaces, normal, 1 column]

36

--Enter 1 space--

37

Keywords: Rokok, KTR, Government

38

[terdiri dari 3-6 kata]

39

40

--Insert

Page

Break--

44
45
46
47
48
49
50
51
52
53
54
55
56
57
58
59
60
61
62
63
64
65
66
67
68
69
70
71
72
73
74
75

INTRODUCTION

[The HEADING line must begin with the words INTRODUCTION boldfaced. UPPERCASE, Aligned left, TNR 12, 1.5 spaces, bold, 1 column]

Deskripsi area penelitian/based practise, informasi latar belakang terkait, dan hipotesis yang diuji dalam penelitian harus dimasukkan dalam bagian ini. Pendahuluan harus memberikan informasi latar belakang yang memadai sehingga pembaca yang melek ilmiah dapat memahami dan menghargai eksperimen yang akan dijelaskan. Pendahuluan HARUS menyertakan kutipan teks atas termasuk referensi ke ulasan terkait dan literatur ilmiah utama. Tujuan spesifik dari proyek harus diidentifikasi bersama dengan alasan untuk eksperimen spesifik dan pekerjaan lain yang dilakukan.¹

Selalu menuliskan referensi dari setiap kutipan yang dituliskan pada penelitian anda²

[Sentence case, align justify, TNR 12, 1.5 spaces, normal, 1 column]

Inline citation followed the Vancouver superscript format. Inline citation should be numbered consecutively in the order in which they are first mentioned in the text.

METHODS

[The HEADING line must begin with the words METHODS boldfaced. UPPERCASE, Align left, TNR 12, 1.5 spaces, bold, 1 column]

Bagian ini menjelaskan bagaimana proses anda melakukan penelitian dilapangan. Persetujuan etis harus dinyatakan di sini.

[Sentence case, align justify, TNR 12, 1.5 spaces, normal, 1 column]

Note:

Subheadings I, e.g. --- **Statistical analysis** – prefer to bold in sentence case only.

Subheadings II, e.g. --- *subgroups analysis* – prefer to italic in sentence case only.

RESULTS

[The HEADING line must begin with the words RESULTS boldfaced. UPPERCASE, Align left, TNR 12, 1.5 spaces, bold, 1 column]

76 Bagian ini harus menyajikan data yang diperoleh dari rangkaian metode atau
77 protokol yang dijelaskan di bagian metode.

78

79 **DISCUSSION**

80 [The HEADING line must begin with the words RESULTS boldfaced. UPPERCASE, Align left,
81 TNR 12, 1.5 spaces, bold, 1 column]

82

83 Bagian ini harus menghubungkan bagian hasil dengan pemahaman terkini tentang
84 masalah ilmiah yang sedang diselidiki di lapangan. Deskripsi referensi yang relevan dengan
85 karya lain di lapangan harus disertakan di sini. Bagian ini juga memungkinkan Anda untuk
86 mendiskusikan signifikansi hasil Anda - yaitu apakah data mendukung hipotesis yang Anda
87 uji? Bagian ini harus diakhiri dengan jawaban/pertanyaan baru yang muncul sebagai hasil
88 pekerjaan Anda.

89 **Tables**

- 90 - Tables must be concise and cited consecutively using Arabic numerals in the text
91 (Table 1, Table 2...etc.). The title of the table should clearly indicate the nature of
92 the contents and sufficient detail should be included in the footnote to facilitate
93 interpretation without reference to the text. Use horizontal rules only.
- 94 - Tables should be self-contained and complement, not duplicate, information
95 contained in the text. They should be supplied as editable files, not pasted as
96 images.
- 97 - Legends should be concise but comprehensive – the table, legend, and footnotes
98 must be understandable without reference to the text.
- 99 - Table captions should be included at the main text.
- 100 - All abbreviations must be defined below the tables. The symbols: †, ‡, §, ¶, should
101 be used (in that order) and *, **, *** should be reserved for p-values. Statistical
102 measures such as SD or SEM should be identified in the headings.
- 103 - Example:

104 **Table 1.** ----- [Sentence case, Align center, TNR 12, 1.5 spaces, normal, 1 column]

Data	Mean ± SD	p-value
Jenis Kelamin		
Perempuan	23 ± 2.4	0.015*
Laki-laki	30 ± 2.8	0.201
Usia	60 ± 1.8	0.023*

105 Note: *significant at p<0.05 by independent t-test; SD = standard of deviation; p=probability.

106 Table utama ----- [Sentence case, adjustable aligning, TNR 12, 1.5 spaces, normal; If
107 the table is over than 1 page, they could be ordered as attractive as possible, without
108 diminish the data values]

109 Catatan dibawah table ----- [Sentence case, Align left, TNR 10, 1 spaces, normal, 1
110 column]

111

112 **Figures**

113 - Photographs, drawings, diagrams and charts should be clear, easily legible and cited
114 consecutively using Arabic numerals in the text (Figure 1, Figure 2...etc.). Please supply
115 figures 1.5 to 2 times the size at which they will be finally reproduced. For line work,
116 submit black-ink drawings of professional quality. Micrographs or other glossy
117 photographs must be of the highest quality. Use standard symbols: ○, ●, ×, □, ■, △, ▲.

118 - If a figure comprises more than one glossy photograph, these should be marked A, B,
119 C...etc. Figure legends should be marked clearly with their correspond letters. Legends
120 should contain sufficient detail to permit figure interpretation without reference to the
121 text. Scale markers should be indicated in the photographs. Color plates are also
122 welcome. The choice of cover art illustration will be made by the Editor.

123 - Notify bellowing criteria:

- 124 a. Are all figures included in your submission as separate files or in a single
125 PDF/Word document/LaTeX suite?
- 126 b. Do all figures have an accompanying legend that describes the content and
127 explains any abbreviations or symbols?
- 128 c. Are all figures cited in the main text of your article?
- 129 d. Are all words or symbols in your figures large enough for easy reading by your
130 audience?
- 131 e. Are all figures saved in an acceptable file type?
- 132 f. Is each individual figure file less than 10 MB?
- 133 g. Were figures created between 80 and 180 mm width? 300 to 600 DPI?
- 134 h. Are all figure files named with their appropriate figure number?

135 - Figures for final production should be submitted as electronic files and hard copy
136 so that the editorial office can ensure that the output of electronic files matches
137 the hardcopy. Please pay particular attention to the guidelines below.

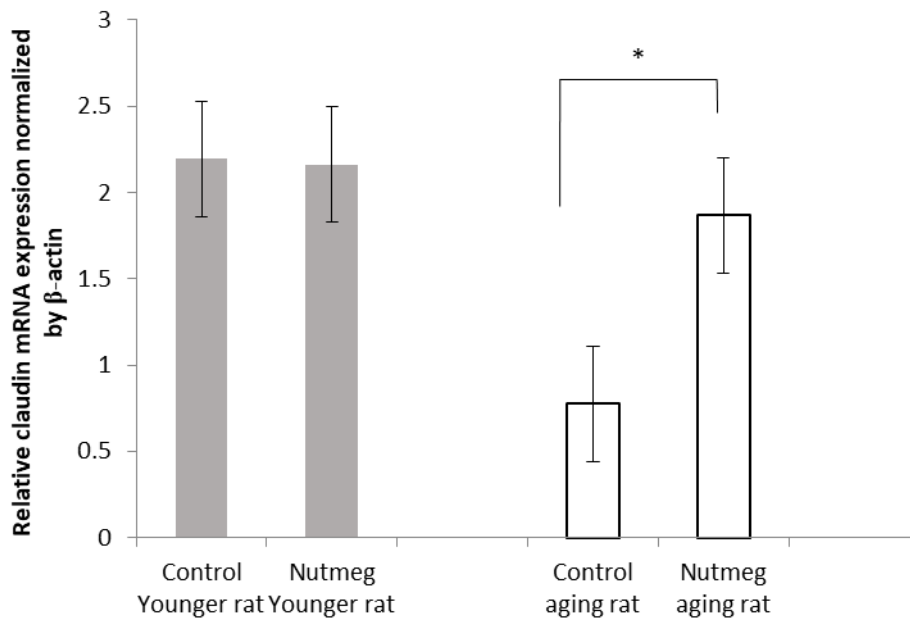
138 - The editorial office cannot undertake preparation of manuscripts and illustrations
139 not conforming to journal style.

140 - Manuscripts of insufficient quality will be returned immediately without
141 refereeing.

142 - A high standard of illustration (both line and photo) is an editorial priority.

143 - All illustrations should be prepared for printing to fit 80 x 240 mm (column width)
144 or 169 mm by up to 240 mm (full page) size. It is preferred that the full-page

- 145 length is not used and that authors keep in mind that the caption will be placed
146 underneath the figure.
- 147 - In the event that full-page length is necessary for plates, captions will have to
148 appear on adjacent pages.
 - 149 - Compound figures with more than one micrograph or photo should be referred
150 by a single figure reference (e.g. Figure 1), and individual parts should be labeled
151 with capitalized letters in the lower left-hand corner.
 - 152 - Lettering should be of a sans-serif type (i.e. fonts without serifs such as Arial) with
153 a minimum published size of 4.2 mm (12 pt).
 - 154 - Descriptive labeling in the figures should be clearly readable, and all lettering
155 should have a minimum published size of 6 pt (2.1 mm) for labeling items on
156 photographs or in line art is recommended and a maximum size of 10 pt is
157 suggested.
 - 158 - Use a scale bar to indicate magnifications and place in the lower right corner if
159 possible.
 - 160 - Computer prepared photographic images must be at a minimum of 300 dpi at the
161 final publication size. Lower resolution will result in pixilation and poor quality
162 images. These should be submitted as JPEG, TIFF or PPT files, but encapsulated
163 postscript (EPS) format is also acceptable.
 - 164 - Computer drawn figures are accepted provided they are of high quality. Please
165 note that graphs produced by many statistic packages are rarely adequate. In
166 particular, letter quality on axes and captions are often poor. Such figures should
167 be exported into an accepted graphics package and lettering rendered using a
168 text function.
 - 169 - Authors should note that **.dot, .bmp, and .pat fills** should be avoided.
 - 170 - Do not use postscript fill patterns as these are often based on bit map patterns
171 that result in screening patterns during final reproduction.
 - 172 - When filling illustrations, use fills such as lines, tints or solids. Line width minimum
173 is 0.25 pt (0.09 mm). Also avoid the use of bitmap scans to render text and
174 detail.
 - 175 - Text should be saved as text at a minimum text size of 6 pt (2.1 mm).
 - 176 - Please submit line art as Corel Draw, Adobe Illustrator, or EPS files. These must be
177 at a minimum resolution of 800 DPI at publication size. High resolution may be
178 necessary where fine line detail is present.
 - 179 - For graphs, Excel graphs are also acceptable. Note that vertical axes must all be
180 at the same scale especially where the paper compares between them.
181 Otherwise they should be produced as separate figures. Avoid 3D plots when
182 presenting 2D data.



183

184

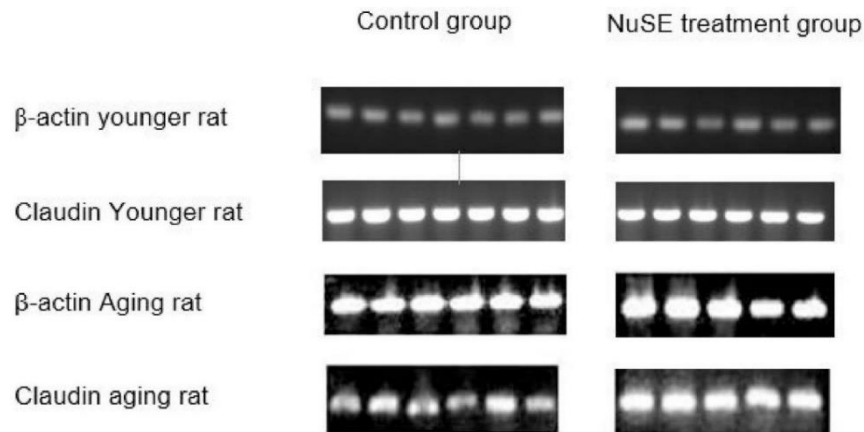
185 **Figure 1.** Example bar chart that showed the relative claudin mRNA expression
 186 normalized by β -actin. Grey-colored bar showed relative claudin mRNA expression
 187 insignificantly between control and nutmeg in younger group. White-colored bar
 188 showed relative claudin mRNA expression significantly in nutmeg higher than the
 189 control within aging group. *Note: *significant at $p=0.00002$ by paired t-test.* -----

190 [Sentence case, Align justify, TNR 12, 1.5 spaces, normal, 1 column; If there is/are
 191 statement of note/symbols, the *italic* style is preferable]

192

193

194 Example of photograph (min. 300 dpi/clearly readable)

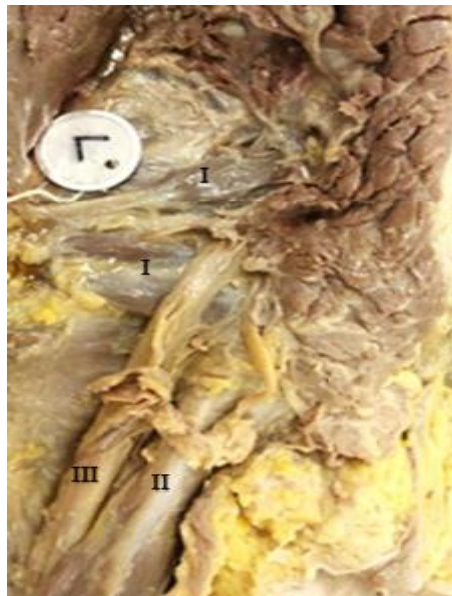


195

196 **Figure 2.** The results of mRNA gel electrophoresis regarding with the claudin
197 expression ----- [Sentence case, Align center (short caption/title, TNR 12, 1.5 spaces,
198 normal, 1 column; If there is/are statement of note/symbols, the *italic* style is
199 preferable]

200

201 Example of one's copyright works



202

203 **Figure 3.** Schiatic nerve (*Permission of Lewis et al., 2016*)⁶ ----- [Sentence case,
204 Align center (short caption/title, TNR 12, 1.5 spaces, normal, 1 column; the permission
205 statement should be *italic*; citation number is written as superscript letter]

206

207 **CONCLUSION**

208 [The HEADING line must begin with the words CONCLUSION boldfaced. UPPERCASE, Align
209 left, TNR 12, 1.5 spaces, bold, 1 column]

210 This section should relate the conclusion section to current understanding of the
211 scientific problems ----- [Sentence case, Align justify, TNR 12, 1.5 spaces, normal, 1
212 column]

213

214 **DISCLOSURES**

215 – [The HEADING line must begin with the words DISCLOSURES boldfaced. UPPERCASE,
216 Align left, TNR 12, 1.5 spaces, bold, 1 column]

217 **Funding**

218 Provide statement regarding funding sources, grant or third-party support.

219 **Conflict of Interest**

220 Memberikan pernyataan mengenai kemungkinan hubungan antara penulis (s) dan
221 organisasi atau orang yang dapat mempengaruhi objektivitas selama penelitian,
222 menafsirkan hasil serta selama penulisan naskah.

223 **Author Contribution**

224 Menuliskan secara rinci kontribusi dari masing-masing penulis misalnya. AA dan BB terlibat
225 dalam pembuatan konsep, perancangan dan pengawasan naskah. CC dan DD melakukan
226 penelitian. AA dan CC menganalisis data. Semua penulis menyiapkan manuskrip dan
227 menyetujui versi terakhir dari manuskrip ini untuk diserahkan ke jurnal ini.

228 [Sentence case, align justify, TNR 12, 1.5 spaces, normal, 1 column]

229

230 **ACKNOWLEDGMENTS**

231 – [The HEADING line must begin with the words ACKNOWLEDGMENTS boldfaced.
232 UPPERCASE, Align left, TNR 12, 1.5 spaces, bold, 1 column]

233 Mencantumkan bahwa riset ini telah dipresentasikan pada kegiatan The 7th
234 Indonesian Conference Tobacco or Health (ICTOH-7th) 30-31 Mei 2022 di ruang virtual

235 [Sentence case, align justify, TNR 12, 1.5 spaces, normal, 1 column]

236

237 **REFERENCES**

238 [The HEADING line must begin with the words REFERENCES boldfaced. UPPERCASE, Align
239 left, TNR 12, 1.5 spaces, bold, 1 column]

240

241 1. Pontén B. The fasciocutaneous flap: its use in soft tissue defects of the lower leg. *Br*
242 *J Plast Surg.* 1981;34(2):215–20. Available from:
243 <http://www.ncbi.nlm.nih.gov/pubmed/7236984>

244 2. 1. Tini K, Samatra IDPGP, Wiryadana KA, Supadmanaba IGP. Clinical Profile of Patients
245 with Cerebrovascular Disease at Stroke Center , Sanglah Hospital Denpasar Bali. *Bali Med*
246 *J.* 2020;9(1):129–36. Available from:
247 <https://www.balimedicaljournal.org/index.php/bmj/article/view/1665>

248 - Vancouver Superscript style guideline. For ease of formatting we recommend the
249 authors to utilize our CSL template.

250 <https://csl.mendeley.com/styles/315880411/vancouver-superscript-IntisariSainsMedis>

251 - References should be *numbered* consecutively in the order in which they are first
252 mentioned in the text (not in alphabetic order).

253 - Identify *references in text*, tables, and legends by Arabic numerals in superscript
254 without square bracket after the punctuation marks.

255 - *References cited only* in tables or figure legends should be numbered in
256 accordance with the sequence established by the first.

257 - Identification in the text of the particular table or figure. Use the style of the
258 examples below.

259 - The titles of journals *should be abbreviated* according to the style used in *Index*
260 *Medicus*.

261 - Use complete name of the journal for non-indexed journals.

262 - Avoid using abstracts as references.

263 - Information from manuscripts submitted but not accepted should be cited in the
264 text as "unpublished observations" with written permission from the source.

265 - Avoid citing a "personal communication" unless it provides essential information
266 not available from a public source, in which case the name of the person and date
267 of communication should be cited in parentheses in the text. The commonly cited

268 types of references are shown here, for other types of references such as
269 newspaper items please refer to ICMJE.

270